



NETRAIL
ENGINEERING PTY (LTD)

Company Profile

2024



■ Company Information

Company Registration	2006/003191/07
Country of Registration	South Africa
Registered Address	392 Walter Sisulu Str. Miederpark Potchefstroom 2531
Directors	VL Havenga
Shareholders	Sonvic Trust 49% Synergy Equity Trust 51%
Auditors	Johnny Ford & Co P.O. Box 1558 Potchefstroom 2520
Physical Address	7 Promosa Ave Potch Industria Potchefstroom 2531
BEE Status	51% Level 2



■ Company Information

Company Registration	2006/003191/07
Country of Registration	South Africa
Registered Address	392 Walter Sisulu Str. Miederpark Potchefstroom 2531
Directors	VL Havenga
Shareholders	Sonvic Trust 49% Synergy Equity Trust 51%
Auditors	Johnny Ford & Co P.O. Box 1558 Potchefstroom 2520
Physical Address	7 Promosa Ave Potch Industria Potchefstroom 2531
BEE Status	51% Level 2



■ Company History

Netrail Engineering (Pty) Ltd is a leading engineering firm with over 50 years of experience specializing in providing comprehensive engineering solutions tailored to the unique needs of the mining industry.

Netrail Engineering has built a reputation for excellence, innovation, and reliability in delivering engineering services to the mining industry.

The company is situated on the premises consisting of 4000m² under roof facilities with heavy industrial overhead cranes. The company has access to more than adequate equipment under agreement to satisfy the requirements of the market and can produce a wide range of engineering works and products.



At Netrail Engineering, we are dedicated to driving progress and prosperity in the mining industry through engineering excellence and innovation.

We provide ongoing maintenance and repair services to ensure the continuous operation of mining equipment, minimizing downtime and maximizing productivity.



■ Product Range



Specialized Reconditioning of:

- Mine Locomotives
- TMM Equipment
- General Turning of Wheels & Axles
- General Boilermaking
- 380 U Salzgitter Air Loaders
- Wheels & Axles
 1. Hopper Wheels
 2. Loco Wheels

Manufacturing of:

- Hoppers
- Sand Cars
- Material Cars
- Explosive Cars
- Drill Steel Cars
- Chutes
- Grisleys
- Man Carriages

Netrail Engineering (PTY) LTD is an approved agent for OEM Salzgitter.



Netrail Engineering (PTY) LTD is an approved agent for AR Controls to supply IncoValve & Controls; Arvalv; DeZurik, Apco Hilton and YDF Valves.

The benefits of using DeZURIK, INCO Valves, ARVALV & Red Valves in mining operations include:

- High Quality Products
- Customization Options
- Reliability
- Durability
- Advanced Technology
- Safety Compliance
- Technical Support
- Cost-Effectiveness

These advantages contribute to **improved efficiency, productivity, and profitability** for mining companies relying on these types of valves.



■ DEZURIK VALVES

 **DeZURIK**
APCO | HILTON





Imported from **Canada and USA**



INCO VALVE & CONTROLS



Designed and engineered in South Africa, with manufacturing facilities in **South Africa; China and South Korea.**



INCO's Type 50 & Type 100 Filter Regulators are reliable precision units designed for instrumentation and general purpose use in both standard environments (Type 50) and corrosive environments (Type 100).

The regulators have a rugged construction, the T50 regulator housing is made from **epoxy coated die cast aluminium**, **AND THE T100 HOUSING IS MADE FROM STAINLESS STEEL.**

 **INCOAIR**



IncoAir HPY SERIES SCOTCH YOKE PNEUMATIC ACTUATOR



IncoAir KG SERIES LINEAR ACTUATOR



INCOAIR RT SERIES



INCOLOK SERIES 100



INCOLOK SERIES 200



■ INCO VALVE



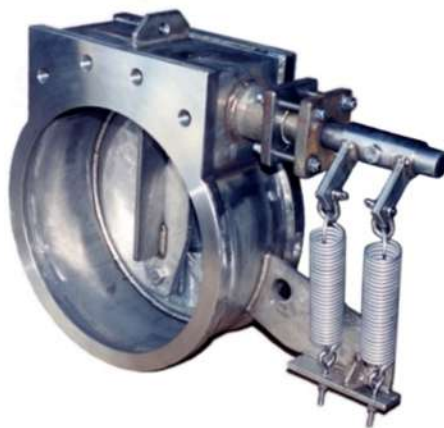
INCO VALVE SERIES 63



INCO VALVE SERIES F16 & F400

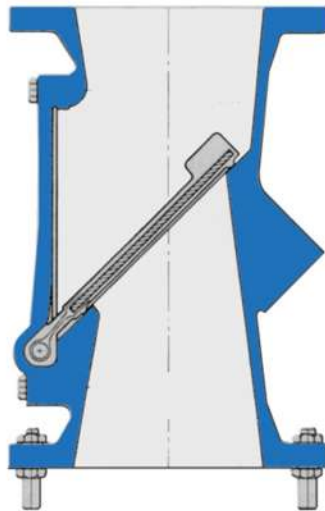
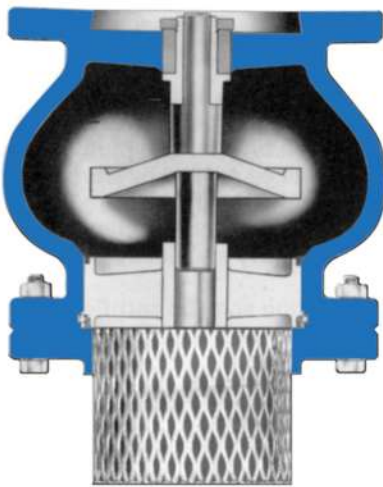


■ HILTON VALVES

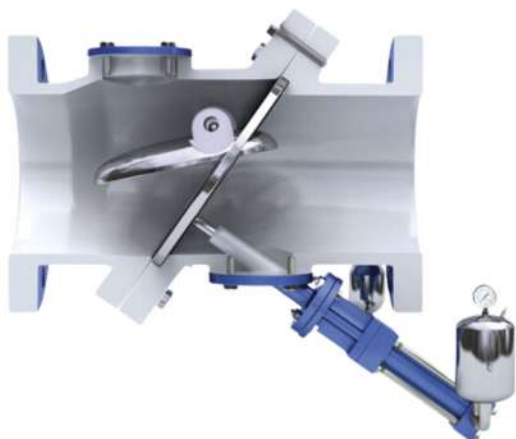


HILTON

■ APCO VALVES



■ APCO VALVES



APCO

Hopper Wheels & Axles



We manufacture & import our own **NRA wheel castings and axle boxes** of all different types and sizes for the South African market.



Hopper Wheels & Axles



Hopper Wheels & Axles



Company Environmental Policy

Netrail Engineering (NRA) recognizes the importance of environmental stewardship and sustainability in our operations and the services we provide to the mining industry. **We are committed to minimizing our environmental impact, promoting conservation, and supporting responsible mining practices.**

Our environmental policy reflects our dedication to these principles:

1.Compliance and Regulation: NRA is committed to complying with all applicable environmental laws, regulations, and standards relevant to our operations and the services we provide to our clients in the mining industry. We will stay informed about relevant environmental legislation and proactively implement measures to ensure compliance.

2.Pollution Prevention: NRA is dedicated to preventing pollution at its source and minimizing the release of harmful substances into the environment. We will strive to identify and implement pollution prevention measures in our operations and assist our mining industry clients in adopting best practices to minimize their environmental footprint.

3. Resource Conservation: NRA recognizes the importance of conserving natural resources and reducing our consumption of energy, water, and raw materials. We will implement measures to improve resource efficiency in our operations, such as reducing waste generation, recycling materials, and using energy-efficient technologies.

5. Environmental Management Systems: NRA will establish and maintain an effective environmental management system (**EMS**) to monitor, evaluate, and continuously improve our environmental performance. We will set environmental objectives and targets, conduct regular audits and reviews, and engage our employees in environmental awareness and training programs.



NETRAIL
ENGINEERING PTY (LTD)

7. Continuous Improvement: NRA is committed to continuous improvement in our environmental performance and the environmental impact of our services to the mining industry. We will regularly review and update our environmental policy, objectives, and targets to reflect advances in technology, changes in regulations, and emerging environmental issues.

8. Communication and Transparency: NRA will communicate openly and transparently with our stakeholders about our environmental policies, practices, and performance. We will provide relevant information about our environmental initiatives, achievements, and challenges through various channels, such as our website, reports, and stakeholder engagements.

9. Leadership and Accountability: NRA management team is responsible for providing leadership and direction in the implementation of our environmental policy and the achievement of our environmental objectives and targets. We will hold ourselves accountable for our environmental performance and strive to lead by example in promoting environmental sustainability in the mining industry.

10. Commitment to Excellence: NRA is committed to upholding the highest standards of environmental excellence in our operations and the services we provide to the mining industry. We will strive to be a trusted partner and a leader in promoting environmental responsibility, sustainability, and innovation in the mining sector.

This environmental policy reflects Netrail Engineerings commitment to environmental stewardship, sustainability, and responsible business practices in serving the needs of our clients in the mining industry.

We will continually strive to improve our environmental performance and contribute to a more sustainable future for generations to come.

■ Safety Policy



At Netrail Engineering, safety is our top priority. We are committed to ensuring the health, safety, and well-being of all employees, contractors, visitors, and the communities in which we operate. As a provider of engineering solutions to the mining industry, we recognize the unique risks and challenges associated with mining operations. Our safety policy reflects our dedication to creating a safe and healthy work environment for everyone involved.

1. Commitment to Safety: Netrail Engineering is dedicated to maintaining the highest standards of safety excellence in all aspects of our operations. We are committed to preventing accidents, injuries, and occupational illnesses through proactive safety measures and continuous improvement.

2. Compliance and Regulation: Netrail Engineering is committed to complying with all applicable health and safety laws, regulations, and standards relevant to our operations and the services we provide to the mining industry. We will ensure that our activities are conducted in accordance with legal requirements and industry best practices. Employees are familiarized with the procedures and regulations of **OHSACT, 85 OF 1993**.

3. Hazard Identification and Risk Management: Netrail Engineering will identify and assess workplace hazards associated with our engineering services and the mining industry. We will implement effective risk management measures to eliminate or control hazards and mitigate risks to the health and safety of our employees and stakeholders.

4. Safety Training and Education: Netrail Engineering will provide comprehensive safety training and education to all employees, contractors, and stakeholders involved in our operations. We will ensure that everyone receives adequate training on safety procedures, hazard recognition, emergency response, and the proper use of personal protective equipment (PPE).

5. Safe Work Practices: Netrail Engineering will establish and enforce safe work practices and procedures to prevent accidents and injuries in the workplace. We will promote a safety culture where employees are empowered to identify unsafe conditions, report hazards, and take appropriate corrective actions to mitigate risks.

6.Equipment and Facility Safety: Netrail Engineering will maintain all equipment, machinery, and facilities in a safe and well-maintained condition. We will conduct regular inspections, maintenance, and testing to ensure that equipment meets safety standards and operates safely in mining environments.

8.Contractor Safety Management: Netrail Engineering will ensure that all contractors and subcontractors working on behalf of our company adhere to the same high standards of safety as our employees. We will require contractors to comply with safety policies, procedures, and regulations while performing work for Netrail Engineering.

9.Continuous Improvement: Netrail Engineering is committed to continuously improving our safety performance through ongoing evaluation, monitoring, and feedback. We will review incident reports, near misses, and safety data to identify areas for improvement and implement corrective actions to prevent recurrence.

10.Leadership and Accountability: Netrail Engineering's leadership team is responsible for providing strong leadership, support, and resources to promote a culture of safety excellence throughout the organization. We will hold ourselves and others accountable for upholding safety standards and fostering a safe work environment.

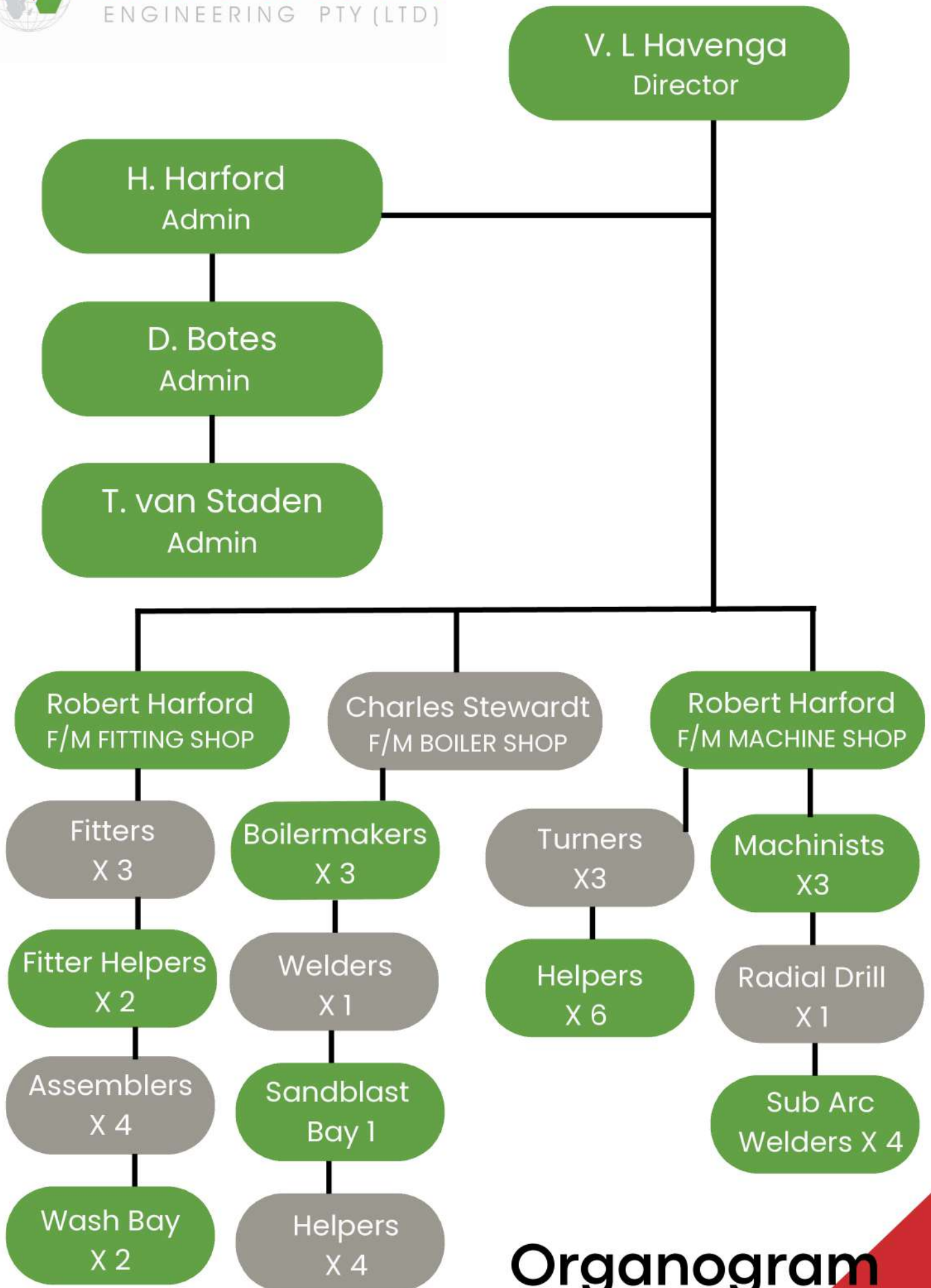
11. Communication and Engagement: Netrail Engineering will communicate openly and transparently with employees, stakeholders, and the mining industry about safety matters. We will encourage collaboration, feedback, and participation in safety initiatives to ensure that everyone is actively engaged in promoting safety.

This safety policy reflects Netrail Engineering's unwavering commitment to protecting the health and safety of our employees, contractors in the mining industry. We will strive to continuously improve our safety performance and maintain a workplace where safety is everyone's responsibility.



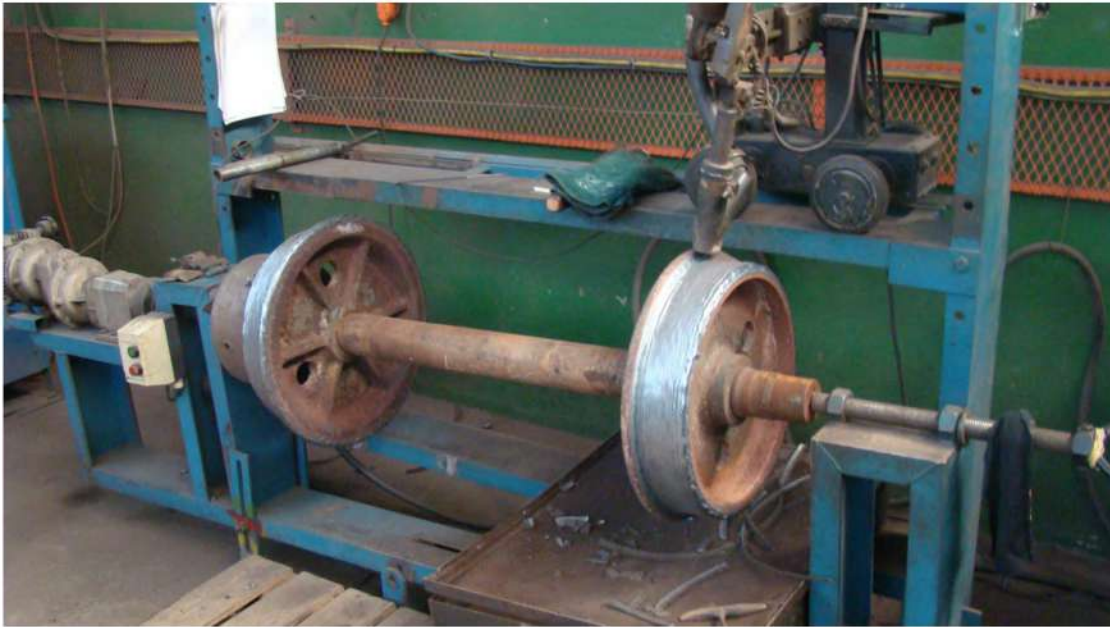


NETRAIL
ENGINEERING PTY (LTD)

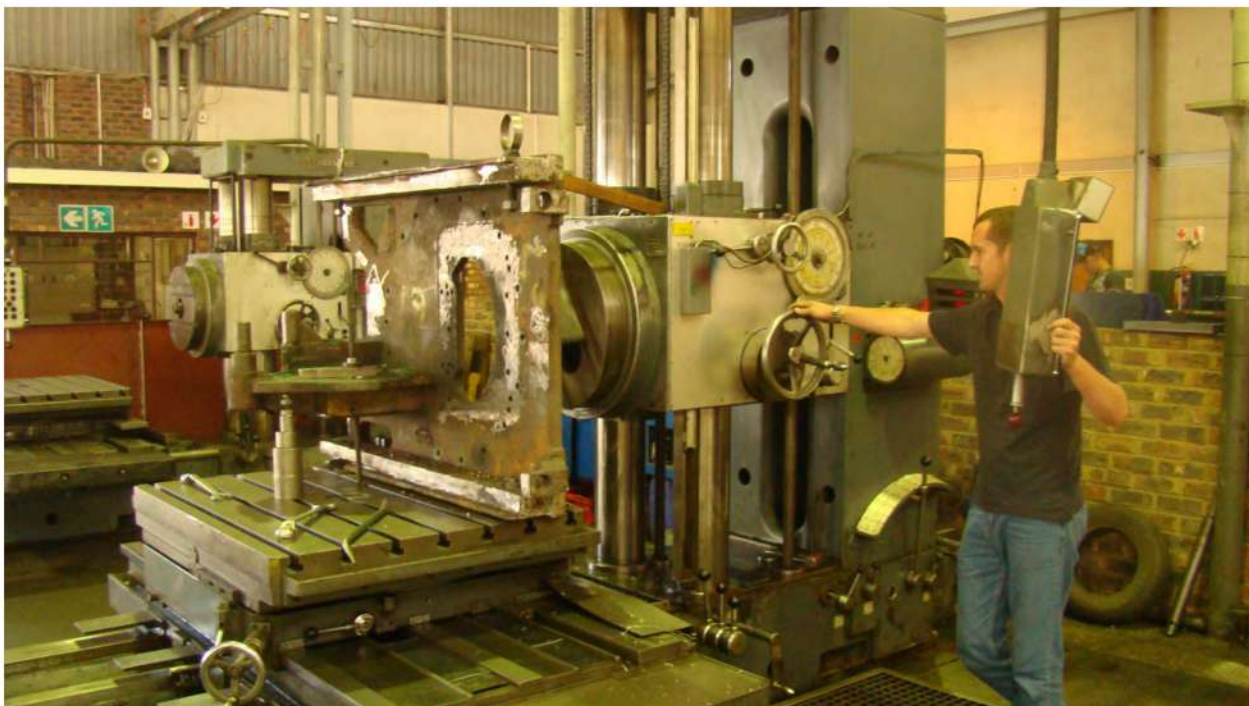


Organogram











NETRAIL
ENGINEERING PTY (LTD)



NETRAIL
ENGINEERING PTY (LTD)



